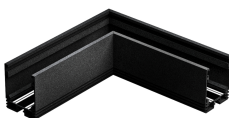



SYSTEM WLD - L-shape connector horizontal 200x200mm



Degree of protection (IP) **IP20**



 Declaration of Conformity

Technical data:

Code	WLD+90003_WLD
Protection class	III
Working temperature range	-20/+40 °
Housing material	Aluminum
Degree of protection (IP)	IP20
Colour	Black
Dimension (AxBxC)	200x200x63 mm
For use	Inside
Assembly method	On the ceiling/Suspended
Application	INT



*applies to the LED source used. **Luminaire luminous flux