

WLD+40011_SMART

WLD+40011_SMART

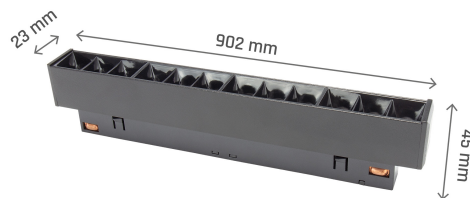
SYSTEM SHIFT SMART- GRID S TRACK LIGHT 204MM 12W 35DEG BLACK CCT/DIM 5 Y WARRANTY



Power	12 W	Voltage	48 V
Colour temperature	3000/4000/6000 K	Colour of light	CCT
Beam angle	40 °	UGR	<19
Degree of protection (IP)	IP20		


Technical data

Code	WLD+40011_SMART
Power	12 W
Nominal current	100 mA
Voltage	48 V
Energy consumption	12 kWh/1000h
Frequency	DC Hz
Protection class	III
Power factor	1
Useful luminous flux*	1200 lm (360°)
Luminous flux**	650 lm (360°)
Lamp efficacy	100 lm/W
Luminous intensity	1200 cd
Colour temperature	3000/4000/6000 K
Colour of light	CCT
Beam angle	40 °
UGR	<19
RA	>90
Light source included	Yes
Uniformity of color SDCM max	5
Working temperature range	-20 to +40 °
Lifespan	50000 h
Housing material	AL+PC
Degree of protection (IP)	IP20
Colour	Czarny
Dimension (AxBxC)	220x23x42 mm
For use	Inside
Assembly method	NA SZYBĘ
Application	Inside
Made in	PRC
Other	CCT/DIM ,




Related documents



 User manual



 Declaration of Conformity

