

WLD+40011_CASAMBI

WLD+40011_CASAMBI

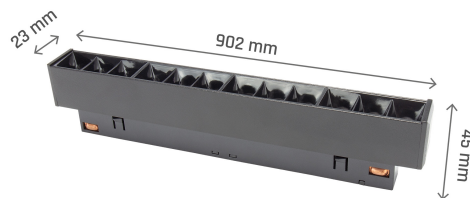
SYSTEM SHIFT - GRID S TRACK LIGHT 204X23X42MM 12W 35DEG BLACK 5Y WARRANTY CASAMBI



Power	12 W	Voltage	48 V
Colour temperature	3000 K	Colour of light	WW
Beam angle	35 °	UGR	<19
Degree of protection (IP)	IP20		

Technical data

Code	WLD+40011_CASAMBI
Power	12 W
Nominal current	263 mA
Voltage	48 V
Energy consumption	12 kWh/1000h
Frequency	DC Hz
Protection class	III
Manufacturer of power supply	tuobo
Power factor	1
Useful luminous flux*	1200 lm (360°)
Luminous flux**	820 lm (360°)
Lamp efficacy	100 lm/W
Luminous intensity	2580 cd
Colour temperature	3000 K
Colour of light	WW
Beam angle	35 °
UGR	<19
RA	>90
Light source included	Yes
Producer of LED diodes	osram
Uniformity of color SDCM max	5
Dimmable	CASAMBI
Working temperature range	-20 to +40 °
Lifespan	50000 h
Housing material	AL+PC
Degree of protection (IP)	IP20
Colour	Black
Dimension (AxBxC)	204x23x42 mm
For use	Inside
Assembly method	NA SZYŃĘ
Application	Inside
Made in	PRC
Other	CASAMBI ,





48V

5
let
5years
years warranty

Die Montage erfolgt über ein einfaches Klick-System
zusätzlich lässt sich die Leuchte je nach Bedarf verschieben

48V

5
let
5years
years warranty

Luminaire assembly within the track on "click" and its free arrangement

48V

5
let
5years
years warranty

Luminaire assembly within the track on "click" and its free arrangement

